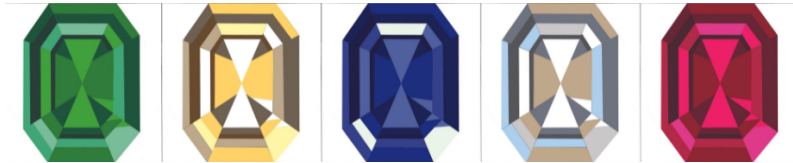


# Dames & Diamonds Supply List

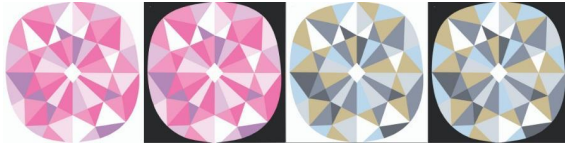
## Available gem patterns

Students will choose one gem/colorway combination to work on in the workshop.

Maximilian's Folly in 5 colorways (see detailed list of fabrics [here](#)):



The Clark Pink in 2 colorways: (see detailed list of fabrics [here](#)):



The Duke Diamond in 5 colorways (see detailed list of fabrics [here](#)):



The Countess in 4 colorways (see detailed list of fabrics [here](#)):



## Additional supply list

- Highlighter in any color
- 18" ruler
- Small ruler with a 1/4" measurement
- 8 Business Envelops in which to store pieces
- Domestic sewing machine and thread assortment (neutrals or colors that match your fabrics)
- Scissors, rotary cutting tools (cutter and mat), pins; we'll be cutting paper with our rotary cutter, so if you want to bring two rotary cutters (one for paper and one for fabric), feel free to do so.
- Suggested, but not required: Acorn Precision Piecing "Seam Align" Glue (1 oz);
- Iron and ironing pad (or board)
- Fabric - The fabrics best suited to this project are solids or gradients. It's best to limit color choices to two hues, with a few values of each. And be sure to bring white and black fabric to add sparkle to the piece. In short, I encourage students to consider using no more than 5-7 different fabrics in their design.